



## Heartland Beautification Committee Agenda February 6, 2014 at 11:45am Recreation Centre Board Room

### 2014 Projects

- *Banners & Signage*
- *Communities in Bloom*
- *Environmental Action Sub-Committee*
- *Heritage Conservation Sub-Committee*
- *Community Gardens*

1. Agenda/Agenda Approval
2. Confirmation of the Dec 5, 2013 and Jan 2, 2014 HBC Minutes
3. Business Arising from the Dec 5, 2013 and Jan 2, 2014 HBC Minutes
4. Statement of Revenue & Expenses as of Jan 30, 2014
5. Communities in Bloom projects:
  - a) Community Orchard
  - b) Report a Drunk Driver Sign
  - c) Stettler Blooms plan
  - d) Memorial Park Revitalization
  - e) Spring Cleanup
6. Community Garden Report
7. Green Committee report
8. New Business
9. Correspondence
10. Next Meeting – March 6, 2014
11. Adjournment

*"Keeping Stettler Clean and Green"*





# Environmental Action Sub-Committee Report

## Feb. 6, 2014

### 1. “Trying to Be Idle-Free” Campaign

- Clearview transportation admin is reviewing bus idling to see where reductions can be made.
- Clearview is very willing to display “Trying to Be Idle-Free” stickers on all buses.
- East Central Alberta Catholic School District has also gladly accepted stickers for Stettler buses.
- The Eco Clubs of Stettler Middle School and Christ King Catholic School monitored idling in their parent parking areas. **Note that the length of time they did their observations varied.** Their observations are below. (THESE ARE OBSERVATIONS ONLY...NOTHING SCIENTIFIC.)

#### Christ King Catholic School area

Dates: Dec. 12, 2013

**Temperature: -15°**

Time: 2:48 – 3:26 p.m.

**Length of time observed: 38 minutes**

Description of Vehicle Idling	Total Time Idling	Person in Vehicle?
Van	38 min.	Y
SUV	38 min.	Y
Car	28 min.	Y
Car	28 min.	Y
SUV	28 min.	Y
Truck	28 min.	Y
Truck	27 min.	Y
Van	27 min.	Y
SUV	17 min.	Y
SUV	16 min.	Y
Truck	16 min.	Y
Truck	13 min.	Y
Truck	12 min.	Y
Truck	12 min.	Y
Truck	11 min.	Y
SUV	10 min.	Y
SUV	9 min.	Y
Car	7 min.	Y
SUV	6 min.	Y
SUV	6 min.	Y

Total idling time: 377 minutes

# vehicles idling: 20 out of 45 total vehicles

Date: Dec. 16, 2013

**Temperature: -2°**

Time: 3:00 – 3:26 p.m.

**Length of time observed: 26 minutes**

Description of Vehicle Idling	Total Time Idling	Person in Vehicle?
Truck	20 min.	Y
SUV	13 min.	Y
Car	11 min.	Y
Truck	9 min.	Y
SUV	6 min.	Y
Van	4 min.	Y
Van	2 min.	Y
Car	1 min.	Y

Total idling time: 66 minutes

#vehicles idling: 8 out of 23 total vehicles

### Stettler Middle School, east street area

Date: Dec. 17

Temperature: -1°

Time: 3:05 – 3:26 p.m.

Length of time observed: 21 minutes

Description of Vehicle Idling	Total Time Idling	Person in Vehicle?
SUV	21 min.	Y
Car	21 min.	Y
Car	21 min.	Y
Car	21 min.	Y
Can	10 min.	Y
Van	7 min.	Y
Car	6 min.	Y
Car	6 min.	Y
SUV	2 min.	Y
Total idling time	115 minutes	
# vehicles idling	9 idling out of 12 total vehicles	

- On Dec. 16 and 17, 2013, Environmental Action committee members, Grace and Marie Brown, talked to parent drivers parked at the Stettler complex and at Christ King Catholic School. We handed out 1/4 page info sheets (**attached**) and offered our “Trying to Be Idle-Free” stickers. All drivers accepted our info. About 30% took the stickers. About 25% were very enthusiastic about what we were doing. All were polite.

- “Trying to Be Idle-Free” stickers:



We ordered 250 stickers, that are attached to the inside of a window and read from the outside. These work well only if the vehicle windows are not tinted.

We have given out about 125 stickers (for buses, to parent drivers, to Eco Club members). We have about 125 remaining to possibly give out at the Trade Show.

- We have “Trying to Be Idle-Free” posters up at all 4 schools.

- We have installed a permanent idling awareness sign at each of the schools, with the exact location of each sign determined with school and central office administration input.

Stettler Elementary School	-	"Kids Breathe Here, Please Turn off the Key"
Stettler Middle School	-	"Be Idle-Free, Please Turn off the Key"
Wm. E. Hay	-	"Idling is Fuelish, Please Turn it off"
Christ King School	-	"Spare our Air, Please Turn it off"

## **2. Curbside Composting**

- On Dec. 17, Graham and Grace presented to Town Council our proposal for curbside composting, which would include kitchen waste as well as yard waste.
- It was decided to arrange a meeting with CanPak, our EA committee and Town admin. to further discuss feasibility. This meeting will likely occur in April.
- Graham set up a Facebook page to promote the conversation regarding composting.  
Visit: [www.facebook.com/StettlerCurbsideCompost](http://www.facebook.com/StettlerCurbsideCompost)

## **3. Trade Show Booth possibilities**

- re-usable bags – Sobey's, No Frills, and i.d. apparel have confirmed that they will donate bags again.
- draw for one compost bin – we have one left from last year that was never delivered since the winner's contact info was thrown out.
- draw for one rain barrel?? (Some visitors to the booth last year asked about them.)
- offer “Trying to Be Idle-Free” stickers and info.??

## **4. Trash to Treasure Day** – Week of April 21-25, 2014, with Spring Clean-Up event that has traditionally corresponded with Earth Day (April 22).

- a specific "declared" time for setting out unwanted items on front lawns to be taken by whoever wishes them.
- if item is not taken, it can be picked up in the Spring Clean-up event.

## **5. “Walk N Roll” Promotion**

- The Stettler Wellness Network and the Environmental Action Sub-Committee will work together on this project to encourage Stettler residents to walk or bike to their destinations.

## **6. Business Recycling**

- still working on a one-page e-mail-out to all businesses via the Board of Trade to remind them of recycling possibilities in Stettler.
- (Last one was sent out in March 2011 by Lee Penner.)

**7. Green Tips** – for January and February (see attached)

**8. Environmental Action Budget**

Budget		\$4000.00
Expenses		
Alberta Traffic Supply – idling sign design	\$ 180.00	
Compost bins for Trade Show	\$ 107.00	
Photocopy "Backyard Composting: Getting Started"	\$ 50.00	
Stepping it up to School (webinar)	\$ 53.63	
Photocopy	\$ 7.50	
Bottle/Can recycling baskets (20)	\$1643.50	
Recycling Excellence Awards – banquet tickets \$50 x 7	\$ 333.00	
Coffee Tree Downtown Park meeting	\$ 17.00	
Idle-free stickers	\$ 450.00	
Alberta Traffic Supply – idling sign completion	<u>\$ 220.00</u>	
Total expenses to date	\$3061.63	
Balance remaining in budget at end of 2013		\$ 938.37

January 6, 2014

## GREEN TIP OF THE WEEK

### *"Young lungs at work"*



1. Exhaust is hazardous to human health, especially children's: **car idling is the second-hand smoking of the outdoors**
2. Ten seconds is the maximum: after ten seconds, you waste more money and fuel idling the engine than restarting it.
3. Modern fuel-injected engines are not meant to idle: idling forces an engine to operate in a very inefficient and gasoline-rich mode that can degrade the engine's performance and reduce mileage.

**Idling pollutes and harms our health, particularly children's. Please turn off your motor.**

[www.thedailygreen.com/living-green/blogs/cars-transportation/warming-up-car](http://www.thedailygreen.com/living-green/blogs/cars-transportation/warming-up-car)

*No one can do everything. Everyone can do something.*

Sponsored by the *Heartland Beautification Committee*

January 13, 2014

## GREEN TIP OF THE WEEK

### *" Re-think idling"*



**Like a warm car? Driving warms the car faster than idling.**

#### **Block Heaters Beat Remote Starters.**

Remote starters can too easily cause people to idle their cars for five to 15 minutes, which is unnecessary. In cold weather, a \$30 block heater, set on a timer to start one to two hours before driving, warms the engine and cuts pollution of your air.

**Idling pollutes and harms our health, particularly children's. Please turn off your motor.**

[www.thedailygreen.com/living-green/blogs/cars-transportation/warming-up-car](http://www.thedailygreen.com/living-green/blogs/cars-transportation/warming-up-car)

*No one can do everything. Everyone can do something.*

Sponsored by the *Heartland Beautification Committee*



January 20, 2014

## GREEN TIP OF THE WEEK

*" Please turn it off. "*



**Running a quick errand? Turn off your motor.**

"Quick errand idling" just wastes gas and pollutes both your town and the planet. Leaving your engine running is hard on your pocketbook and produces greenhouse gas emissions.

**Stopped to Chat? Turn off your motor.**

You're polluting your own air and your neighbour's. **After ten seconds**, you waste more money and fuel idling than restarting the engine.

**Idling pollutes and harms our health, particularly children's. Please turn off your motor.**

[www.thedailygreen.com/living-green/blogs/cars-transportation/warming-up-car](http://www.thedailygreen.com/living-green/blogs/cars-transportation/warming-up-car)

*No one can do everything. Everyone can do something.*

Sponsored by the *Heartland Beautification Committee*

January 27, 2014



## GREEN TIP OF THE WEEK

*"Recycle inkjets & laser toners"*



The Stettler Eco Centre (at the Stettler Transfer Station) accepts all printer inkjets and laser toners for recycling. They contain toxic chemicals and should never be thrown in the garbage. Drop yours off today!

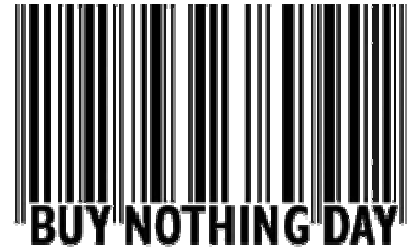
*No one can do everything. Everyone can do something.*

Sponsored by the *Heartland Beautification Committee*

February 3, 2014

GREEN TIP OF THE WEEK

*"Buy Nothing Day"*



Buy Nothing Day is a day to become aware of consumerism – to unshop and unspend. On Buy Nothing Day, practice and reflect on the three Rs hierarchy: Reduce, Reuse and Recycle. When you reduce what you acquire, you reduce waste, and that's the first rule of thumb in the three Rs hierarchy.

It's hard to resist the deals that make us consumers, but really, do we need more stuff?

*No one can do everything. Everyone can do something.*  
Sponsored by the *Heartland Beautification Committee*

February 10, 2014

GREEN TIP OF THE WEEK

*"Give Experiences, Not Stuff "*



Create memories with your Valentine. Memories stay with us a lifetime. "Stuff" usually ends up in the landfill. Try giving the gift of experiences this Valentine's Day. Buy tickets for something that you will enjoy together: a sports event, the theatre, ski passes, take a class together. And the planet will be your Valentine forever!

*No one can do everything. Everyone can do something.*  
Sponsored by the *Heartland Beautification Committee*

February 17, 2014

GREEN TIP OF THE WEEK

*"Wind-up time pieces"*



Need a new timer? Need a new alarm clock? Consider one that doesn't require batteries or electricity. Wind-up timers and clocks do the trick and require no energy to operate. It makes "cents" and helps the planet!

*No one can do everything. Everyone can do something.*  
Sponsored by the *Heartland Beautification Committee*

February 24, 2014

GREEN TIP OF THE WEEK

*"Skip the Bottled Water"*



Need water on the go? Bring a re-usable water bottle, preferably stainless steel rather than plastic. Bottled water has a huge environmental footprint. Imagine a water bottle filled a quarter of the way up with oil. That's about how much oil was needed to produce the bottle. **Collectively we are dumping 40 million plastic water bottles per day!!!**

*No one can do everything. Everyone can do something.*  
Sponsored by the *Heartland Beautification Committee*



Did  
you  
know...?

Idling more than 10 seconds takes more fuel than re-starting your engine?

Idling is unnecessary with today's fuel-injected engines and can actually decrease engine life?

Vehicles warm more quickly when being driven since idling does not warm moving parts?

Idling pollution is like second-hand smoke and those inside the vehicle are just as exposed as those outside?

Information Source: National Resources Canada  
<http://oee.nrcan.gc.ca/transportation/idling/914>

## How can you try to be idle-free?

Avoid idling when:

- waiting for passengers
- running errands
- stopping to chat
- waiting in drive-thru line-ups



Minimize the use of remote-car starters.

Use a block heater on a timer to warm your engine in cold weather.

Warm up your engine for a maximum of 60 seconds, assuming your vehicle windows are clear.

**TRY TO BE IDLE-FREE...it saves money and fuel, improves our quality of life and helps the planet!**

Sponsored by the Heartland Beautification Committee, Stettler

Sponsored by the Heartland Beautification Committee of Stettler



4 min.

Only 1 km  
to Main St.



12 min.

## **Stettler Community Orchards Project**

**Purpose:** To create publically accessible sources of fruit for the community, in an attractive park setting, augmenting and revitalizing an existing park. At the same time, reduce grassed park area, replacing them with long-term urban forestry plantings.

**Background:** Within the town of Stettler, there exist a number of parks of various ages. Due to the poor soil quality throughout much of the community, a limited number of species of tree will grow. Whenever a woody planting becomes established and thrives, it is taken advantage of. In 2000, a large tree/shrub planting was established by the Rotary Club, and over time, has developed into a small urban forest planting with mulched walking paths. Among the species selected for planting were a number of bush fruit shrub species. Many community residents visit this park and everyone loves to share their knowledge of this “secret” fruit orchard. The park has become somewhat overgrown in places, and needs to be rejuvenated and revitalized.

### **Detailed Project Outline:**

An existing mixed wooded park area will be expanded by 10,000 square feet, being planted with an assortment of tree and shrub species, with a focus on hardy fruit species, including dwarf sour cherry, blue honeysuckle, chokecherry, Saskatoon berry, black currant, Nanking cherry, sandcherry, high bush cranberry, sea buckthorn, apple and crabapple. A selection of larger deciduous and coniferous tree species will be chosen to balance out the planting, including species such as larch, spruce, clump birch, mountain ash, Russian olive, etc. The focus of the project is to create a long-term community fruit orchard site that also has mulched walking paths and some more park-like features. Trellises for grapes or planter boxes will be incorporated as an additional features.

A grassed, sloped area to the East-North-East of the existing tree planting will be sprayed out and worked up to prepare to receive the young plants. Compost from the town program will be added to increase the organic matter content and improve the soil. Wide pathways will be staked out and mulched. Stettler is the “Heart of Alberta”, with a heart theme showing up throughout various projects in the community. In line with this, a heart-shaped pathway will traverse the planting. With the assistance of town staff, community volunteers and school children, the plant material will be placed in the site. The entire area will be mulched with 4 inches of acidic wood mulch to conserve moisture and keep down weeds. Plants will be watered in, fertilized and watered for the first few months.

The new site will be connected to the existing site by clearing older material and connecting the pathways. Dead or poorer quality tree specimens will be removed during the planting/preparation process. Park benches will be placed in the heart of the orchard. Trellises for other species (such as grapes) will be installed to offer variety. Plants will be placed at a medium density, with some plans for relocation in future, as trees/shrubs grow. Depending on potential other contributions, it is possible that some raised beds will be included on the periphery of the site, to allow for planting of fruit species, such as strawberries.

2 gateway signs will be built of pressure-treated posts and lumber, with the signs facing outward. One sign will reflect the combined nature of the original site (built by Rotary) and the other new site and contributors. As a part of the rejuvenation process, a sign or map/diagram detailing the different species in the both the new and old park will be added adjacent to the main entrance, in the hope of increasing interest and use of the park.

Plant material will be sourced from local and Alberta nurseries (depending on the plant species) or will be relocated from other local sites.

The site will be maintained by town staff and through the volunteer efforts of citizens that “adopt” the park. Additional pruning will take place later on, as trees/shrubs mature, to remove diseased or damaged material.

Trees/shrubs will be placed in groups and tree/shrub species marked with placards, to educate the community on the various tree species.

**Proposed Program:**

**Enhancement of Community:**

In recent years, there has been an upswing in the interest in self-sufficiency of food production. At the same time, there is a greater than ever demand for Food Banks. The recently added community gardens has increased in size each year, with all available space being filled each year.

The addition of public fruit orchard plantings provides healthy, natural food sources for the public, while providing scenic and beautiful urban forested spaces, which can improve mental and social health. Replacing a certain amount of grassed space with mulched trees and shrub plantings can enhance the public park spaces, and experience in Stettler has shown that long-term tree plantings gradually change the soil chemistry and improve soils. The use of wood mulched beds captures and conserves soil moisture, making parks and planted areas low maintenance, in terms of moisture and also for weed management.

**Community Engagement:**

The Heartland Beautification Committee (with Community Gardens subcommittee) are volunteers and coordinate the efforts of various other volunteers in related projects. Grade 5 students at the public school collect recycled materials and use the money to purchase trees for park spaces around town. They assist in planting the trees they purchase. Rotary is very supportive of community projects. Local businesses are involved in providing in-kind or financial support of community projects. On-going interest will be maintained as fruit from the orchards is used by residents and by tying in educational events with the fruit that is produced. Harvested fruit can also be donated to the Food Bank (which is encouraged).

**Sustainable Development:**

The committee that is overseeing and initiating this project (Heartland Beautification Committee) is a long-standing volunteer community resident committee, which also has members of Town Council and town staff. This committee runs multi-year projects and initiatives, with a significant annual budget. They lobby council for funds and maintain awareness of community needs and potential in the areas of environmental action and awareness, heritage conservation, beautification, etc. This committee oversees the running of the community gardens.

Because of the diverse nature of this committee, they are well positioned to ensure that this project receives on-going and lasting support to maintain and develop this project. This committee has other park projects that are over 5 years old, which still receive maintenance support and consideration.

Similarly, as this project attaches to an existing forested area in a public park, it will come under the Parks and Leisure Services department’s responsibility for maintenance and care. Parks across the community are “adopted” by community groups, organizations or individuals annually, to do clean up, maintenance, etc.

**Technical Expertise:**

The planning and project oversight will be done by a combination of volunteers and Town of Stettler Parks and Leisure Services staff. Lee Penner (Director of Parks and Leisure Services) is a trained arborist and has over 20 years of Parks and nursery experience in the region. Rob Spencer (Heartland Beautification Committee / Chair – Stettler Community Gardens) is a volunteer, but is Commercial Horticulture Specialist with Alberta

Agriculture and Rural Development in his day job, with over 10 years of experience as a provincial specialist in Alberta and with degrees in Horticulture Science. Stettler PLS staff will carry out the construction and maintenance of the project.

**Budget / Report:**

<b>Description</b>	<b>Cash Contribution</b>	<b>In-Kind Contribution</b>	<b>From the Ground Up Contribution</b>	<b>Total</b>
Site preparation (non-selection herbicide application)	\$500.00			\$500.00
Site preparation (breaking ground x3 passes) – labour and fuel		\$600.00		\$600.00
Compost (50 yards)			\$1400.00	\$1400.00
Work in compost – labour and fuel		\$200.00		\$200.00
Wood chip mulch (100 yards)			\$5000.00	\$5000.00
Application of mulch		\$1000.00		\$1000.00
Trees (x15) – larger caliper / larger scale			\$2000.00	\$2000.00
Fruiting Shrubs (~x150)	\$200.00		\$2500.00	\$2700.00
Planting labour		\$1000.00		\$1000.00
Initial watering / fertilizing		\$500.00		\$500.00
On-going watering		\$1500.00		\$1500.00
Gate posts x4	\$100.00			\$100.00
Pressure-treated Lumber	\$50.00			\$50.00
Promotional signs (x2)	\$800.00 (total)			\$800.00
Information sign (plant material outline)	\$600.00			\$600.00
Posts for sign / trellises	\$250.00			\$250.00
Trellis material	\$150.00			\$150.00
Installation of signs		\$400.00		\$400.00
Park benches x2	\$1500.00			\$1500.00
Tree/shrub labels (50)	\$300.00			\$250.00
Maintenance of site		\$1500.00		\$1500.00
Cleanup of existing planting		\$1000.00		\$1000.00
<b>Total</b>	<b>\$3,650.00</b>	<b>\$7,700.00</b>	<b>\$10,900.00</b>	<b>\$23,000.00</b>

**Recognition of CN's Funding:**

As this park receives both walking and adjacent vehicular traffic, it would be appropriate to place recognition signage at the entrance to the interior walking pathways. A gateway sign similar to the one shown below would be constructed, prominently displaying the name of the park and indicating the source of funding support (not featured in example picture).

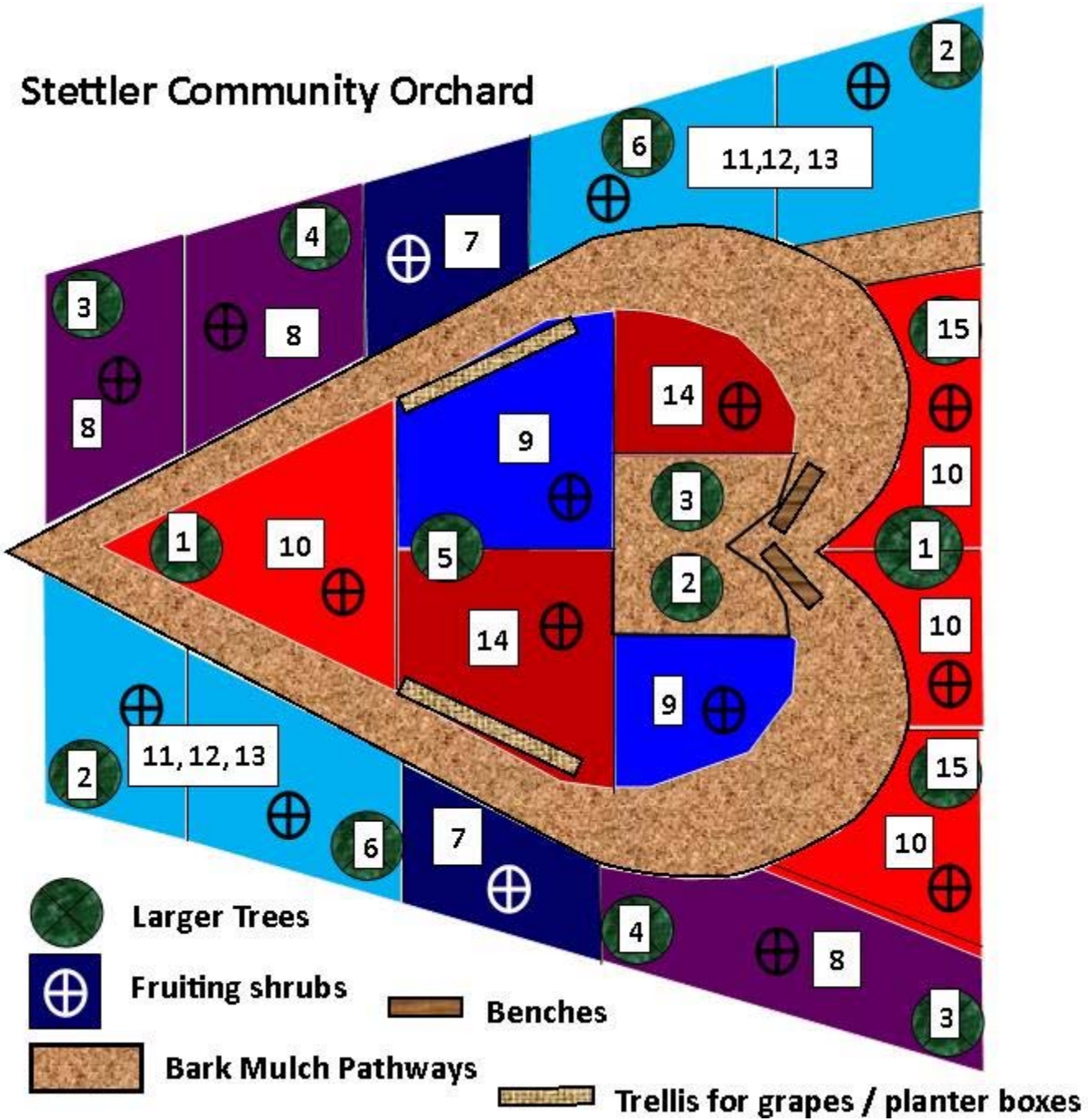




Once construction of the site is completed, an official “open house” or launch event will be held, with public dignitaries present, as well as the press and public. Pictures of the construction process will be collected and posted on the Town of Stettler website (accompanying information on the sources of funding and the purpose of the project). Articles will be submitted to the town newspaper and radio for promotion of the project.



# Stettler Community Orchard



<b>#</b>	<b>Species</b>
1	Clump Birch
2	Larch
3	Spruce
4	Mountain Ash
5	Russian Olive
6	Apple
7	Black Currant
8	Saskatoon Berry (Northline/Thiessen)
9	Blue Honeysuckle (Borealis) + pollinators)
10	Dwarf Sour Cherry (SK CVs)
11	Nanking Cherry
12	Sandcherry
13	Sea Buckthorn
14	High bush cranberry
15	Crabapple