


Landscape/ Turf and Groundcovers

2019 Landscape / Turf & Groundcover-related activities



NEW in
2018/2019

- Streetscaping projects include completing traffic bulb planters and railroad-themed sidewalks over a period of time
- Public School Complex created outdoor classroom sites and integrated educational designs – ongoing maintenance and development
- **Rejuvenation and resurfacing of running track** – multi-partner project
- **Community Orchard Project launched** – Phase 1 completed, Phase 2 completed; ongoing maintenance, tweaking and some snacking...
- **Strategic Plan for WSP** – \$25K for landscape redesign, basic water feature, natural playground equipment

2018 Evaluation Form

LANDSCAPE		
<p>Landscape includes planning, design, construction and maintenance of parks and green spaces suitable for the intended use and location on a year-round basis. Elements for evaluation include: native and introduced materials; balance of plants, materials and constructed elements; appropriate integration of hard surfaces and art elements, use of turf and groundcovers. Landscape design should harmonize the interests of all sectors of the community. Standards of execution and maintenance should demonstrate best practices, including quality of naturalization, use of groundcovers and wildflowers along with turf management.</p>		
	Max	Actual
Municipal		
Gateway Impressions First impressions of the community including gateway/entrance treatments	10	8
Sustainable Designs – Soft Landscape Sustainable designs (seasonally adjusted year round): energy efficient, use of green materials, naturalization, xeriscaping, suitable plant varieties (including pollinator friendly) , traffic calming, bank stabilisation	10	8
Sustainable Designs - Hard Landscape Urban and civic design standards for streetscape and public places: flags, banners, public art, fountains, site furnishings, signage, seasonal design and décor, walkways and paving materials	10	8
Landscape Plan Integrated and implemented throughout the municipality	10	8.25
Turf Management Programs Integrated Pest Management (IPM), Plant Health Care (PHC), alternative solutions to diseases and infestations when appropriate, increased naturalization and adapted maintenance programs	10	7.75
Landscape Maintenance Policies, Standards, Best Practices and Programs	10	8
Landscape Quality Landscape maintained to appropriate standards, specs and best practices.	5	3.75
Qualified Resources Qualified personnel (including seasonal staff) and/or in place training programs and/or qualified experienced contractors	10	7.75
Year-round use Demonstrated year-round opportunities and programs for education and use of parks and green spaces (urban agriculture, community gardens, parks and recreation programs)	10	8.5
Business & Institutions		
Sustainable Designs (Seasonally adjusted year-round): energy efficient, use of green materials, naturalization, xeriscaping, alternate groundcovers, urban agriculture	10	7.5
Integrated Plan Contribution to urban & civic design and public green spaces above requirements: such as public art, streetscape, site furniture, fountains & innovation in concept & design	15	13.5
Maintenance Quality Adequate ongoing life cycle management (ongoing maintenance, ground & asset management, rehabilitation & replacement) of all landscape elements	10	8.25
Residential		
Streetscape Appeal Of landscapes (year-round, seasonal, themed)	15	13
Maintenance Quality Lawn care, trees and shrub maintenance (with demonstrated results)	15	12.75
Plant Selection Selection of plant material (native, local, innovative, edible & pollinator friendly plants)	10	8
Community Involvement		
Public Participation in community programs (including children/youth) such as: urban agriculture, community gardens, "yard of the week", volunteer park maintenance, holiday illumination & decoration (promotion, organization, etc.)	20	18.5
Volunteer Recognition Recognition (by municipality and/or volunteer groups) of volunteer efforts in all aspects of the Communities in Bloom program including activities in all evaluated criteria	20	18.5
Landscape Total	200.00	168.00

2018 Evaluation Form

LANDSCAPE

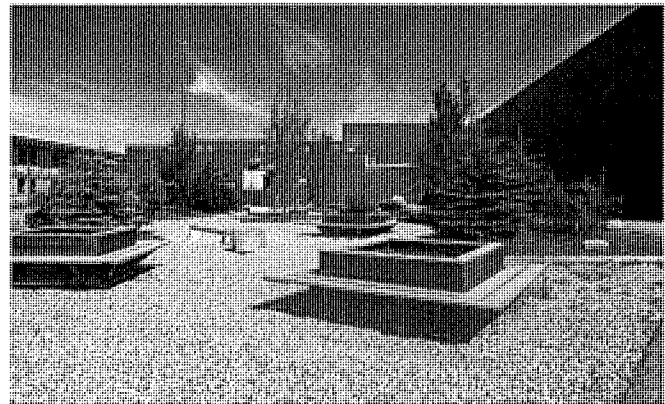
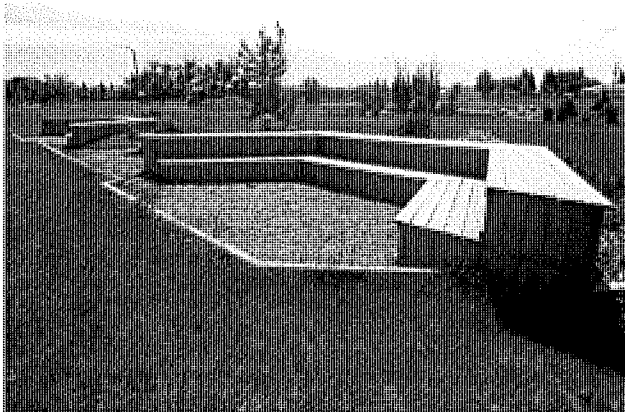
Observations:

In this area we congratulate the community for the trail around West Stettler Lake. This is great and we know the community makes good use of the trail and is looking forward to the extension of the system linking all areas of the Town.

Stettler Mountain is in a wonderful place and from the path on it one can tell it has been climbed more than Mt. Everest! The Kinette playground adjacent to the trail and Mountain is well located. Every community should strive for 10 sites and 10 things to do at each site. This Lake is one nice site and many activities can take place here.

The downtown landscape is highlighted by the rail markings on the sidewalk and on bike racks. The build outs on the street not only look good but improve pedestrian safety. It is appropriate for the rail line history to be a theme for Stettler..

The community gardens are very well maintained and along with the great work done at the school with the outdoor classroom have added to the overall appeal of the landscape.



The street buildouts as mentioned before are excellent. The banners downtown are a good addition to the landscape.

Recommendations:

Stettler Lake is a jewel just as it is, but to enhance this wonderful area consider some additions:

- a) An adult fitness station near the playground. Allowing the whole family to exercise together.
- b) If you have physically handicapped children in the area how about a raised sand box or some specially designed play equipment. This would be a step toward inclusiveness.
- c) Marking the trail with distance markers to give an idea of how far one has gone or needs to go. This would tie in with the great animal foot prints now on the trail.
- d) The signage entering the east side of the park is blocked by over grown trees remove the sign or trim the trees.

2018 Evaluation Form

- e) If possible remove as many sign posts as you can around the trail and paint the information on the trail or add the sign to an existing post. Too many posts distract from the natural beauty of the trail.



When cutting the turf in parks, cemetery or anywhere else consider using the mulching feature on the mower as this is less labour intensive and is better for the grassed areas.

Consider using street banners as a way to indicate the road to sites in Town. For example banners depicting hockey or library books might be placed on poles leading to the SRC facility.

A public bench in the proximity of the Rail to Tale and Elevator site would be a good addition for those that are walking to and around this interesting area.

The water retention areas that exist are a very good idea and in the areas that have water all year consider installing aeration fountains that will improve the quality of water and add to the visual appeal of the retention ponds.

Landscape / Turf & Groundcovers

HBC & TOS Video – LANDSCAPE, ETC

Climatic challenges (typically dry conditions in most years and atypical extremely wet conditions in 2010 & 2011 and in 2016) and some significant soil limitations (solonetzic and high pH soils) give Town of Stettler Parks & Recreation staff and community residents a challenge in plant selection and survival, particularly for trees. Stettler has numerous old treed areas, many parks and green spaces, which are integrated into the framework of the community, making Stettler a beautiful oasis in the prairies.

These areas are under review by the Parks and Green Spaces Master Plan. A new fertilization program recommendation was implemented in the last few years. All of the Parks now have a classification to help them to be maintained properly, and to prioritize maintenance needs for better cost and time management.

All parking lots are receiving tree and boulevard placement according to the new downtown streetscape plan.



You said it – We DID it (already)!

“Evaluate areas in all the parks, at schools and other public spaces where mowing might be reduced or eliminated. Meadows can be wonderful for creating habitats for wildlife and pollinators.”

Our Parks staff have been gradually reducing mowing to only areas where it is needed, based on use. They are very conscientious when it comes to naturalizing an area, as the deeper rooted grasses improve our poor soils over a long period.

Pest Management

A **dandelion control program** is in place. A contractor is hired annually for two sprays per season. Occasional spot chemical applications are made as required. Areas where chemicals are applied are marked. **Scouting for noxious weeds** in parks is carried out, with spot treatments applied as required.

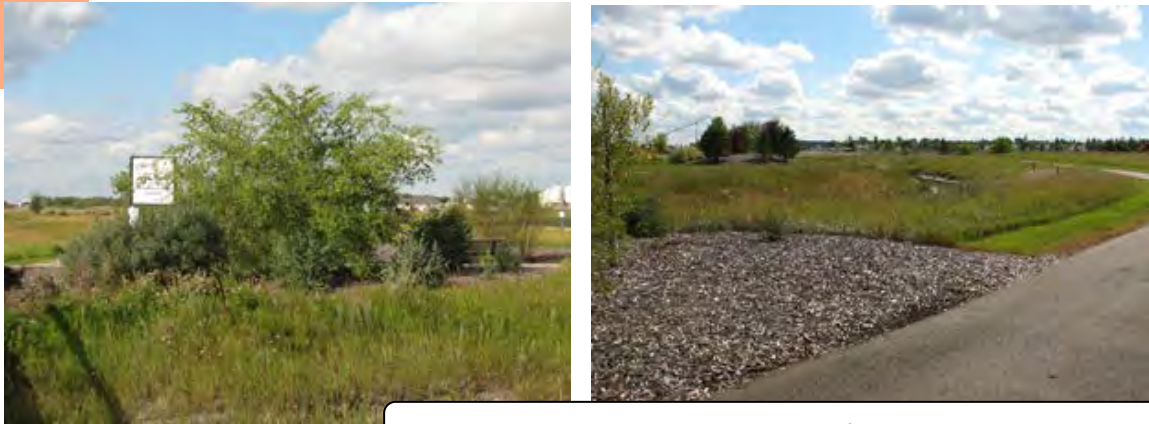
Natural planting program

With landscaping projects, as much as possible, **native or drought resistant plant species** are chosen, in order to enhance survival. In all cases, only hardy plants are grown. Some non-woody perennial or annual plants are grown in permanent beds.

Mixed permanent bed



All landscaped beds around the town are mulched with wood chips, to conserve moisture and prevent weed growth. Many integrate benches or are adjacent to extensive hard surface walking paths.



Mulched beds are a part of natural planting strategy

Mowing schedule

Grassed areas are maintained regularly, with **frequency of mowing determined by use patterns** and requirements. Where possible, **areas are not mowed, so as to leave natural areas**. Sports fields are mowed at 2.5" and the parks are mowed at 3". Sports parks are aerated and fertilized every year in the early spring. A TORO mower with a wider deck was purchased, and has decreased the number of man-hours needed for mowing. A specialized mower was purchased for the cemetery, which significantly reduced labour of mowing around the grave sites.

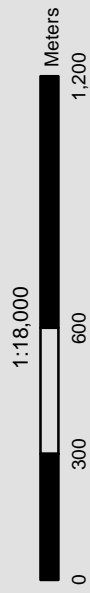
Walking paths

Many kilometers of **asphalt walking/biking paths** run across Stettler, connecting the majority of the town, from the cemetery in the Southeast to West Stettler Park in the West. The number of pathways is being expanded annually. Pathways have grass borders and trees are placed along them to add interest and beauty. There are enclosed garbage cans and benches positioned regularly. Priorities are to connect previously difficult to reach parts of town. In 2017/2018, new pathways were put in up to the Emerson Acres neighbourhood from 51st Ave, past the school sports fields and past the Ag Society grounds (south side).

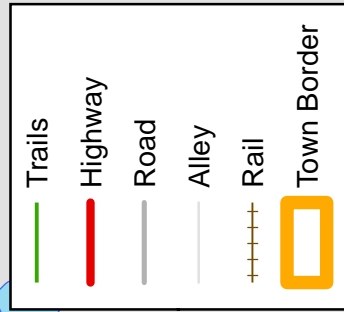
[Link to Walking Path Map](#)



Hard surface walking paths wind throughout Stettler



Map produced September 2016
Intended for general information only
The Town of Stettler is not responsible
for any errors or omissions.
Datum: NAD 83
Projection: UTM Zone 12
Additional copies available at
www.stettler.net





Trees add visual appeal to walking paths



Garbage cans & benches are placed along pathways

Main Street / Downtown Core / Streetscaping

The main street of Stettler is beautified using both **ground level and hanging basket planters**, combined with various **street trees** that are starting to grow in size. Baskets contain a range of plant material, to draw the eye and create interest. **New planters and beds** are gradually being installed at **newly designed crosswalks**, as these areas are installed. In 2018, one of the large planters was filled with **day neutral strawberries**, rather than flowers.

New in 2018

The Town of Stettler is budgeting for Main Street streetscaping every year until it is complete, although it is being done by component parts in some areas, to reduce the level of disturbance and disruption. Some that have already been completed are: The Town Office and Clearview School Division, Stettler Registries, former Dan D Variety, and Rainbow Photo. Trees are being replaced and repair work is done regularly. Businesses pay for a portion of the frontage costs.

Gradually, older buildings are being torn down or renovated and businesses are renovating their fronts. The last few years have seen a number of **businesses on Main Street get a facelift**.

NEW-ISH

The joint Town of Stettler / Clearview Public School Division office building (2009) provides the example for main street development, with a larger green footprint/shadow on the property, being set back off the sidewalk to provide larger green areas around businesses.



Joint Town of Stettler / Clearview Public School Office

Some sidewalks are being installed in a railway theme (many downtown sidewalks have the railway track pattern). A number of new crosswalk “bulbs” have been developed, with the new railroad sidewalk design.



Crosswalk bulbs and sidewalk replaced – railway design





Increased green building footprint and railroad sidewalks



Main Street streetscaping – new crosswalk planters

You said it – We (already) DID it

“Businesses would benefit from enhancing their street presence by installing public art, furniture and/or plant materials at their storefronts.”

Many businesses already have taken it upon themselves to decorate their storefronts. We’ve noticed more in the past year or two. We recognized businesses for this in one of our programs.

Businesses are responsible for maintaining their own planters and baskets.

Parking lots incorporate landscaped **mulched perennial and woody ornamental beds**, with classic style light standards. In many cases, a **rock/stone base** is created for posts or other features.

You said it – We DIDN’T do it (YET)!

“...might consider choosing an annual colour theme for the downtown plantings... Perhaps businesses could be encouraged to adopt a planter for planting and maintenance.”

Businesses are given the freedom to design & decorate according to their preferences. We will consider a change in future.

We implemented a Community Container Contest, which has an annual theme for the planters in WSP.



Revitalized parking lot – mulched beds & wrought iron light standards

Multi-function features

Reflecting the climatic realities of the town, many of the newly developed areas (such as the new sports fields or new developments in North neighborhood subdivisions) are built to function as **snow or water retention ponds or drainage basins** in wet periods, but also serve a

beautification or other use purpose. They have mulched, treed beds on the periphery, but have ponds in the bottom as well, rather than being simple grassed areas. The pathways in some areas (Meadowlands subdivision – south Stettler) serve as pathways and storm water runoff channels.



Pathways serve as walkways & storm water channels



Multi-purpose Snow / Water Retention Ponds



You said it – We CONSIDERED it!

“At the retention ponds, add signage to indicate ‘no swimming, no skating; to protect the town from future liability.”

Parks and Leisure Services have taken into consideration the risks and will be acting on this recommendation in the future

A number of parks are used for a range of purposes depending on the season. The open green space of several parks is **mowed for use in the summer** and then serves as **open ice skating rinks in the winter**.



Outdoor rink converts to skateboard/pickle ball court in summer



Grassed area is flooded for open air ice rinks in winter

The outdoor skating rink NW of the Recreation Centre is iced in the winter and is a skateboard park in the summer. With the completion of the new skateboard park, the existing skateboard park will be used for a pickle ball court in the summer.

Integrated Natural Landscaping

Highways 12 and 56 Intersection Pergola – the intersection of 2 highways has limited aesthetic features and there are strict provincial department limitations on what can be done in the area. To improve the visual appeal of the site, a **pathway** was installed across the green space and a pergola frame was placed on the site. Picking up on the “Heart of Alberta” theme, the **mulched bed is heart shaped** and has native trees and shrubs. A **heart-shaped stone/brick pad** is within the pergola and there is a bench to sit on. The pergola pillars have **stone/brick bases**. Flower baskets are hung during the season. The pergola is connected to the walking/biking pathway network.

You said it – We DIDN'T do it!

“The pergola at the intersection of the 2 major highways is hidden by large signs... why not move the pergola to a neighbourhood park or playground...”

The positive impacts of the pergola at the existing site far outweigh the concerns with the sign. It has resulted in significant improvement in the area in terms of cleanliness & landscaping.

HBC members met with Transportation officials about the potential for moving the one sign. A different department is responsible for the sign.



Pergola at intersection of Highways 12 & 56

West Stettler Park (the largest of the community parks) - hard surface (asphalt) walking/biking paths wind through grassed areas with a limited number of natural trees and circle around the edge of a man-made lake/pond. The lake/pond is actually a storm retention pond and drainage basin and is connected to the canal / creek system that flows through the town. It is kept stocked with fish (year round using an aeration system) and has several catch and release

fishing areas/platforms for use by the public (during allowed seasons). An **information sign** was installed in 2012 and a **mural poster** was installed on the back side of the sign in 2013.

The **majority** of the park's grassed areas are **not mowed (80% natural)**, but are maintained to encourage natural growth of trees and grasses, allowing tree seedlings and **natural "groves"** to develop. When trees grow well in a particular area, the undergrowth is encouraged and beds are mulched with recycled wood chip mulch, to conserve moisture and to cut down on weed growth. After a time, the undergrowth is tidied up, but the overall grove remains intact.



"Naturalized Groves"

The **natural mowing strategy** creates mowed strips along pathways and in designated areas (e.g. in front of the gazebo). The remainder of the park is left to grow longer, filling in with native, hardy shrubs and other perennial species.



**Natural mowing strategy –
mowed border strips with
rough, native growth**

In 2017, **10 self-watering planters** (36inch) were placed in the park. They were from the **Annual Community Container contest**, with the theme of Canada150. This contest continued in 2018 (Theme = 5 senses), with 6 teams, and 2019 (Theme =

Colour Your World), 8 teams. They add variety and colour along the pathways.

They have become very interactive, particularly for patients at the Points West care facility. They were placed near the newly installed **black wrought-iron LED**

light standards, which were installed in 2017.



**Black wrought-
iron style LED
light standards**



The hill (used for tobogganing in winter and general amusement in the rest of the year) was constructed from the soil dug out to create the pond. Part of the tourism promotions for the region includes a **“Have you climbed Mt Stettler?”** option.

Mount Stettler



West Stettler Park – pond & hill

NEW in
2017

Paths are used **year round, day and night** by many residents and community visitors. **Solar lighting** along the pathways was under investigation for several years. Instead of solar, a **large number of LED standards** were installed in 2016/2017. Several bridges traverse the canals or “inlets” of the pond.



Bridge over canal system in West Stettler Park



Pathways in West Stettler Park are used day & night, year round

A **raised gazebo** is used for weekly entertainment and other community events. The gazebo looks out over the pond and has removable wind screens.



West Stettler Park gazebo

Future Expansion

As part of the **development requirements** for builders/developers, a percentage of every new development must be devoted to green space. The development planned for west of West Stettler Park will include the **“twinning” or “mirroring” of WSP pond**, resulting in a significant expansion of the park in the coming years. This will work to improve the drainage of the property and provide the necessary green space that integrates into the existing landscape. It is not known when this work will be completed.

NEW in
2019

Strategic Plan – WSP Redevelopment Plan

The town of Stettler has formed a committee of staff to evaluate West Stettler Park and develop a plan to enhance and redevelop portions of the park, including elements that will enhance the use, appearance and activities in the park. A budget of \$25,000 has been initially allocated towards the project. The project is in its infancy, but it is hoped that plans will be finalized and implemented in 2020. A WSP Redevelopment Survey was distributed via social media, requesting public input on various changes or features that might be put in the park. At present, there is a desire to install a basic water feature, natural-style playground items, and look at improving the hill.

Berm system and planting trees

To combat the poor soil conditions, **man-made berms** are built up and hardy trees are planted in the tops. This allows the roots to grow undisturbed above the poor soil layers, with the hope that the trees will survive longer. Bermed areas are integrated into, and surround, activity areas such as a water spray park.

You said it – We DIDN'T do it (YET)

“The town might consider adding an outdoor adult exercise gymnasium, with special purpose equipment, in or near WSP.”

We’ve looked at this in the past and due to the incredibly high cost of the equipment and limited use seasons, we’ve put this idea on the back burner for now.

The WSP Redevelopment Plan includes elements that will bring more activities into the park, including natural play equipment, which would serve multiple purposes.

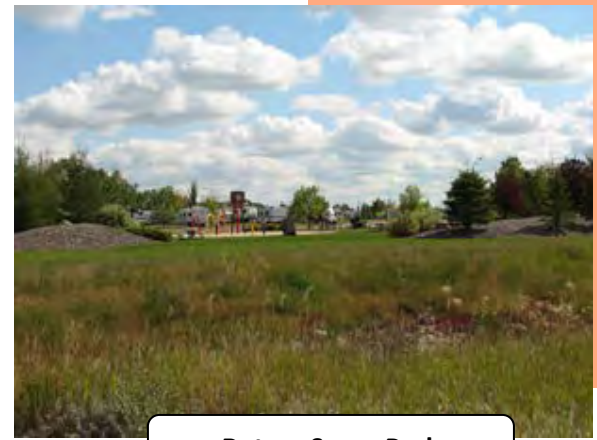


Other Parks

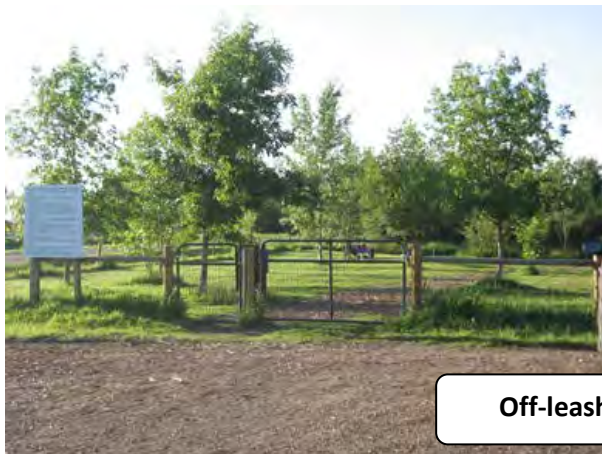
Rotary Spray Park – This flat surface water park uses less water and is surrounded by sheltering raised berms, with woody plant material. The water is collected for reuse in watering town planters.

Off-leash Dog Park – This Park is situated on a site that was previously a town nursery site, located on the edge of the eastern industrial area. It was returned to a wild/natural state and now has mowed/mulched pathways and is fenced.

Community volunteers / dog park users spread mulch on the pathways and have installed **dog exercise equipment**. Donated benches are incorporated throughout the several-acre site. An information sign was added in 2012 and a **mural poster** was installed in the summer of 2013.



Rotary Spray Park



Off-leash Dog Park



Rotary Millennium Tree Park – Planted in 2000 using a wide diversity of seedlings, with some large landscape rocks included to add height in the initial years. This large treed area (several acres) was mulched and left to grow up naturally, with some pathways cut over time. Semi-hidden pathways wind through

the shaded undergrowth, with fruit trees close by for the wanderers to pick. It is maintained by volunteers and town staff, with minimal maintenance requirements. There is a grassed area next to the park that is used as a winter skating rink and an additional space used by seniors. Signage was updated recently.



Rotary Millennium Tree Park

You said it – We DID it!

“Some of the trees ... showed damage at the base from mowing and weed eaters...”

Parks and Leisure Services staff are aware of the issue and will work to rectify the damage and mitigate against further damage in future.



Memorial Tree Park

Memorial Tree Park – Individual trees are placed in a mulched bed in grassed areas adjacent to the cemetery with a central plaque outlining the individuals to which the trees are dedicated. A cedar gazebo is also on the site. Tree species are selected from a range of hardy tree species, with the emphasis on diversity (i.e. they are not all one species).

Memorial Park - The **metal gazebo** was powder coated in late 2013 and **revitalization of the park** was completed in late summer/fall 2014, with the shale and landscape fabric being removed by students from the high school and completed by a contractor. The shale was replaced by bark mulch. Pruning was carried out to open up the view into the park, to reduce inappropriate activities in the park, and reduce vandalism.

You said it – We DID it!

“...work with volunteers to remove the plastic under the shale...”

In 2015, Wm E Hay students worked for 6 weeks (1-2 times per week) to remove the shale and landscape fabric in Memorial Park. This was completed in 2015.

Thrashing machine – to reflect the pioneer and agricultural heritage of Stettler, and to direct people to the Stettler Town and County Museum, a vintage thrashing machine was placed in Pioneer Park. It is annually surrounded with a planting of wheat.

Sports Fields

There are a number of sports fields (soccer, softball) situated around Stettler. They are widely used from April through to the fall for local league play and tournaments.

New Sports Park - was completed in 2010, with usage starting in 2011. This facility was built to replace existing fields on non-town properties. It features **4 completed baseball diamonds** and 2 soccer pitches. The soccer pitches were used for 1 year and were then closed and were rebuilt in 2011 and were reopened in 2013. A concrete washroom house was built in 2014. Total cost for the sports park is approximately \$1.1 million. \$330,000 was raised by fundraising over several years, with donations received from public and commercial sources. Plaques/tiles were sold in 2010 and 2011, with installation of the tiles completed with the building was completed (2015). Many of the amenities were donated. Additional funds were received from a provincial grant and from allocated town budgets. Fundraising continues towards completion of the project and future components. Businesses have donated trees and materials to build several beds in this area (2015/2016)

These facilities will increase the ability to offer higher class events and attract tournaments.

[Link to Stettler Sports Park webpage](#)
[Link to Stettler Sports Park Donation Package Presentation](#)

NEW in
2014/2015



Baseball diamonds by West Stettler Park & Museum



New Sports Park – baseball diamonds & soccer pitches

NEW in 2019

Running Track Resurfacing Project – originally built in the early 1990's, the running track has seen a significant amount of use over the decades and is well worn. The collaboration between several levels of government and partnership between various groups has resulted in plans to resurface the track in the summer of 2019.

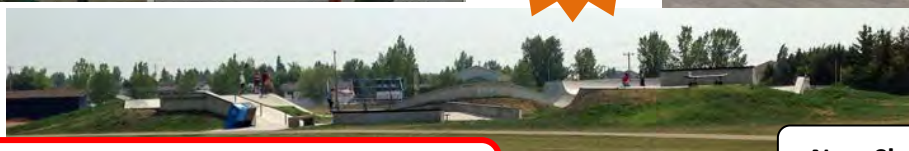
Motocross Park – The land is leased from the town to the private club. They operate events and also partner with the R/C Racers club. The land is located adjacent to the Transfer Station. **Tennis Courts** – located by the school complex. The courts are maintained by Tennis Club, but are open to public use. **New directional signage** was purchased by the HBC and was installed in 2013.

Skateboard Park – originally, skateboard facilities were restricted to a converted outdoor ice rink adjacent to the Stettler Recreation Centre. Groundbreaking for Phase 1 of the Skateboard park took place in early July 2014 and construction was completed in late 2014. It is hoped to get the rest of the funding over time to complete the entire project. In the meantime, this park sees significant usage all day every day. Lighting was installed in summer 2015.

Stettler Independent - June 27/12



NEW in 2014/2015



NOTE: The former rink / skateboard area has been converted to a pickle ball court

New Skateboard park

Stettler Sports Park

44 Ave.

68 St.



Map produced March 2008
Intended for general information only
The Town of Stettler is not responsible
for any errors or omissions.
Datum: NAD 83
Projection: UTM Zone 12

Town considers shining light on new skate park – Stettler Independent, May 13, 2015

"After school it is packed," said Mike Lawlor, president of the Skateboard Association. "Kids are there from the moment school is out until the sun goes down."

He said a big request from parents, skateboarders and police has been for lights.

"RCMP say it's hard to see and monitor the park at night," said Lawlor.

The Skateboard Association would like to install two solar powered lights, one on each end of the park, for \$3,060 each.

"We wanted to stay eco-friendly."

The association has the funds to pay for both lights. After the two are installed, Lawlor said they would monitor the brightness and decide if more will be needed.

Lawlor brought the idea to council last week for feedback and also to discuss how long the lights should be left on if they were to be installed.

"If it's solar-powered, leave them on as long as the battery lasts," said Coun. Darcy Bachman. "It's phenomenal to see the usage."

Coun. Karen Sernecky said she went to the skate park often with her kids and saw how much it gets used.

"I think lights are a fantastic idea and I think it would help," she said.

Coun. Malcolm Fisher agreed that lights should be installed at the park, but he said having them on until around midnight is late enough.

Mayor Dick Richards was the only one at the table who expressed initial concern about installing lights at the park.

"I have some reservations about lights, [but] I will continue on with an open mind," he said.

Council will take the request to staff to formulate a recommendation, which will be discussed at the next council meeting.

In addition to discussing the lights, Lawlor also presented council with a cheque for \$34,859.42 to cover the final instalment the town paid to cover the Skateboard Association's portion of the cost of the skate park.

"Without their support, this project wouldn't have gotten off the ground," said Lawlor.

Besides the funds that were given as a loan, which has now been repaid, the Town of Stettler contributed \$175,000 to the park. The total cost of the park so far has been \$392,000.

County Reeve Wayne Nixon cuts the ribbon, with Mayor Dick Richards and Town Councillor Will Brown. Also present are skatepark board members Mike Lawlor and Heidi Fraser along with skate board enthusiasts from the community.



Stettler's new skatepark gets a grand opening

MOUSH SARA JOHN
INDEPENDENT REPORTER

Stettler's new skatepark received a formal grand opening on Wednesday, Oct. 22 as County Reeve Wayne Nixon cut the ribbon to mark the occasion along with mayors Dick Richards and town councillor Will Brown.

Also present at the occasion were Stettler Skatepark Association board members Mike Lawlor, Heidi Fraser, Cathy Dudenstey, Karen Hensley and other past and present board members.

"We held the official grand opening now because we have the lights being installed at the park, and the donor plaques are finished and installed," said Mike Lawlor, board member of Skatepark Association. "It was really all about taking the time to recognize the people who helped contribute to turn the park into a reality."

It was easy to see how the skatepark had become this "cool place" for the community kids with skateboards and skateboard enthusiasts hanging out.

Also present at the opening were local personal and business owners who had contributed funds towards the project.

The Stettler Skatepark Association was formed four years ago and fundraising efforts made slow but steady progress with bottle drives and community barbecues.

Speaking of how the idea came about, Heidi Fraser, one of the board members of the skatepark association said, "I had been driving my son to skateparks all over central Alberta for two years in a row and decided it was time that Stettler had a decent skatepark as well."

"Whenever I took Jared to other parks, I had my girls with me too, so that meant we were utilizing other facilities in that city or town as well. I wanted to bring that to Stettler."

Lee Penner, director, Parks and Leisure Services was an integral part of the fundraising process, helping with the paperwork

for government grant applications, besides town, county and several service clubs presentations for funding.

Although phases 1 and 2 of the park were completed last fall in 2014, the association is still fundraising to complete phase 3, which is the bowl.

"We started meeting regularly with a few other parents and park users and pulled off some small fundraisers to get things going and get the word out there," said Fraser.

"Cathy Dudenstey has also been on board since day one, and about a year into getting things started we were fortunate to have Mike Lawlor join our team."

According to Fraser, for such a small core group, they really got a lot accomplished in a short period of time.

"Our most successful fundraiser by far has been our yearly Kickflip into Christmas fundraiser, which is a night geared towards businesses bringing their staff for the Christmas party, however, anyone is welcome, it's not just for businesses only," said Fraser. "I love the skatepark! It's right off my back door and is my son's second home, and I love that it is a free facility

with equal access to all, no matter age or ability."

Speaking of the project, Lawlor added, "This was truly a project that couldn't happen without a community banded together. The support we have had over the past four years has been unparalleled and really is what got this project happening."

In his speech at the inauguration Lawlor ac-

knowledgeed all the volunteers and supporters and thanked the local residents and business owners for their support.

"Most importantly a massive thank you to all local residents and business owners for their support whether it be financial, volunteering, or even just voicing support to help create an action sports area, as well used as our skatepark is today."

Reconnect With Better Hearing



Did you know, everyone in Alberta aged 65 and over qualifies for hearing aid coverage every 5 years?

Call for Details
403 742 4504

Lisa Layden
Registered Hearing Aid Practitioner
Main Street, Stettler

CENTRAL
Vision
& HEARING

Bismarck Community Club thanks everyone who came out and supported our Annual Fall Roast Beef Supper and to the many who helped with it. It was a great success.

Special thanks to Bismarck Store for the Grocery Hampers & Gift Certificates. They were won by Lynda Wilkie, Eudine, Elisea Green, Stettler & Thelma Bassett, Hanna.

Special thanks to the volunteers who helped with this fundraising. Volunteers, you are what keeps our small communities alive and we thank each of you who helped & brought food for our supper.

Thank You

Bismarck Community Club

Bridges and Canals

Stettler has a number of canals that crisscross the town. These are integrated into the parks and green spaces, with natural and artificial systems being combined.

Directional Signage

As Stettler is a town, it **does not have control of the highways** that pass N/S and E/W through the town, which can create challenges to directing visitors and new residents to facilities located around the town. Over the past several years, the Beautification committee, as well as town staff and community groups and businesses have purchased numerous **highway directional signs** to facilities such as the Town & County Museum, New Sports Park, Stettler Recreation Centre, AgriPlex, Alberta Prairie Steam Tours, Tennis Courts, etc.



Information Signs

A number of **information sign boards** were built and installed in 2011/2012, including one in West Stettler Park (for community event information), one on the shed at the 1st Community Garden (gardening rules, information, calendar events, etc.) and one at the off-leash dog park (information for Friends of the Dog Park – dog park users). Another is in place at the Lake View Cemetery. A **Mural Art Contest** was held in 2013 and the top three (voted) selections were chosen to be placed as art on the back of each of the signs (WSP, Cemetery, Off-leash dog park). These murals were installed in Summer 2013 (See *Heritage Conservation* section).



Information signs around town

Playgrounds

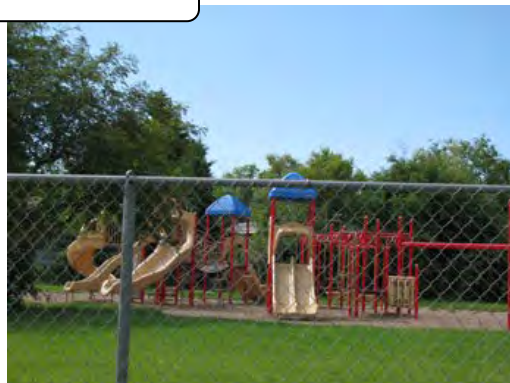
There are a **number of playgrounds** situated throughout the different neighborhoods of Stettler. New playgrounds are added to fill gaps in neighborhoods (e.g. Viking Playground in east Stettler). Playground equipment is replaced as required and/or as funds are available, in a **priority system**. Most playgrounds feature green space, with graveled play areas. One playground utilized a recycled tire crumble in the place of gravel. Some playgrounds also feature outdoor basketball courts and other equipment. Most playgrounds were/are created with the financial support and donations of community service clubs (e.g. Kinsmen).



Playgrounds around Stettler



Playgrounds around Stettler



Kinsmen Viking Park / Playground – to fill a significant hole in the playground distribution in town a Viking ship themed playground was built in east Stettler. The playground was installed in late April 2011 and has been very well received to date. The cost of the playground was approximately \$100,000, with over half being raised by Stettler Kinsmen club, and significant in-kind labor being contributed.



Viking-themed playground in East Stettler



Front of Viking-themed playground

A **new playground** was developed for West Stettler Park, by the Spray Park, again through the efforts of the Kinettes/Kinsmen of Stettler. Funding was achieved and the playground has been built.





Moush Sara (independent reporter): Volunteers from the community helped in the building of the new playground at the West Stettler Park. The playground has been in operation since Monday, Oct. 26.

Stettler's new playground, KIN Park, ready for play

MOUSH SARA JOHN
INDEPENDENT REPORTER

Stettler's new playground at the West Stettler Park has been in operation since its inauguration Monday, Oct. 26.

One of Stettler Kinette Club's major projects this year, the facility was successfully funded and completed with the help of the community and volunteers.

"Once the playground equipment was delivered we had to unpack it and start putting it together, but as there were lots and lots of projects of all sizes that we needed to build, there was always something for every volunteer to help with," said Allison Baird, social director of the Kinette Club of Stettler. "We started

by digging 108 holes for the base structure, put all the individual pieces together around the project and then we stood everything up in the holes and spent an entire day just screwing it together."

On the final day of the installation, they had to concrete each of the holes.

A couple of weeks later the Kinette Club had a company come in and pour in a five-inch thick base of recycled tire.

"We are extremely happy by how this has turned out, and though there are some pathways and landscaping that is still required to be finished, it can be done by the time spring comes to give the surround site a much cleaner look," said Baird. "Our Kinette Club is very pleased that we were able to

get this project completed before the snow comes, and we worked extremely hard within our club and our community to raise the funds needed in just a little over a year."

Speaking highly of the community and the volunteers who have contributed their time and efforts to make this a reality, Baird said, "Stettler and area always has the greatest volunteers. You can usually always count on businesses and or individuals to lend a hand through either a donation of money or a donation of labour to help reach a goal, and we were extremely lucky as we had so many people that wanted to help."

Some local businesses had even donated some of their employees to help with the

building during the process.

"We've heard lots and lots of very positive things regarding the new playground, especially because the playground is designed for ages zero and 12, making it accessible to different age groups," said Baird. "The biggest response is how excited members in the community are that there will be a place for the kids to play while social events or fitness events are happening at the park."

An official grand opening and barbecue is scheduled in the spring.

"Our club is also working on a permanent sign for the playground, named KIN Park, a great reminder of the awesome community businesses and individuals that helped us reach our goal," added Baird.

Entrance signs

As a part of regular planning and in response to community requests, it was determined by Town Council that **entrance signs** needed to be updated. They undertook a community consultation process, to allow community residents to select a design for the new signs. An on-line poll had 326 votes (5% of population), with 54% of the votes for the top design. Signs were installed in the summer/fall of 2011. Total cost for the 4 signs from town budgets was estimated at \$101,870 (\$25,467/sign). A grant for \$25,000 was received from Canadian Badlands. The potential for **adding Communities in Bloom signage** on the entrance signs is pending expiration of the agreement with Canadian Badlands.

Old Entrance sign
(South entrance)



New entrance signs – front & back

Landscaping of the areas around the entrance signs has a **natural look**, with hardy native species planted.



NEW in
2017/2018

New CIB signage for
Service Club Signs

You said it – We DID IT (and are working on it)!

"Considering your long-term successes on so many levels in the CIB program, it would be appropriate to add signage to your gateways attesting to that fact. Show pride in your accomplishments!"

We drafted designs for signage for both the Service Club sign boards and the entrance signs. The plans were submitted to TOS office for approval. CIB signage was added to the Service Club Signage in 2018. Entrance signage is pending.

Stettler Community gardens



NT COMMUNITY Wednesday, June 6, 2012



RICHARD FROESE/Independent reporter
Heartland Beautification Committee chairman Rob Spencer shows off a new sign in front of the Stettler Community Gardens.

Growth spurt for Gardens

RICHARD FROESE
Independent reporter

Stettler Community Gardens continues to grow in size and support. Heartland Beautification Committee planted its third season two weekends ago.

"We've got a lot of new and good ideas from neighbours (and) gardeners and added a lot of features from that," said Rob Spencer, who chairs the beautification committee and the gardens sub-committee.

"We want to make the space more beautiful, with a picnic table, a bench and other plans."

Starting with about 5,000 square feet in the first year, the garden has now expanded to about 12,000 square feet, with space for resident gardens and to produce food for the Stettler and District Food Bank.

"We are full-up again the community gardens," Spencer said.

This year, about 30 residents have acquired lots, with larger space in demand this year.

For the food bank, the volunteers planted plenty of leafy vegetables, such as spinach, lettuce, swiss chard, broccoli and other greens.

"We want to provide as much over a longer period," Spencer said.

Strawberries are expected to be available free for the picking this harvest season.

Fruit bushes, such as sour cherries and honey suckle and rhubarb, have also been planted.

This year, the garden has gained support from neighbours, schools and several businesses that provided seeds at discount prices.

"We've got almost every grade from Stettler schools, from kindergarten to Grade 11, who have contributed to the gardens this year," Spencer said.

Grade 2 students from Stettler Elementary School created row markers.

In the coming weeks, the garden committee also plans to plant sunflowers around the perimeter of the gardens.

TTLER INDEPENDENT COMMUNITY

Wednesday, May 30, 2012



RICHARD FROESE/Independent reporter

LIFELINE — Young gardeners help water the Community Gardens last weekend as the popular attraction in the heart of Stettler held its official opening for this season.

Stettler Independent – June 6, 2012

Stettler Independent – May 30, 2012

- Concept initiated by group of organizations within the community (Alberta Health, Stettler Ministerial, etc.) in 2008/2009
- A community forum was held to gather ideas and create an outline of what the Community Gardens would include
- Stettler Community Gardens Committee created to undertake planning and implementation
- Site selected within easy driving and walking distance from the centre of town
- 6-10 months of community consultations, seeking permissions, project planning, preparing the ground, seeking donations and launching
- Committee = sub-committee of Heartland Beautification Committee with \$5000/year budget
- Officially opened in May 2010, with approximately 5000 square feet of ground broken
- Due to interest and demand, gardens were expanded by approximately 3600 sq. ft. in the fall of 2010
- Further demand for spaces resulted in a additional expansion of 4400 sq. ft. in 2012
- Consultation with gardeners and other users of the site resulted in a number of additions and improvements to the site in 2012 – strawberry raised beds, fruit shrub areas, vines, etc.

- The original site reached a size limit (13,000) at the current site; therefore additional site locations were investigated.
- A waste green space was chosen in another part of town (over a high pressure gas line area) and funding sought to allow development. **A design was created using low disturbance concepts and a built-up design** (bermed garden). A grant was applied for and in April 2013, committee received **\$17,900 from TD Friends of the Environment Fund (TDFEF) to create a new community garden.**
- Materials and construction was completed, with the new gardens being planted in early June 2013, with fruit shrubs, grassed edges and other activities being completed throughout the spring/summer.
- Over the fall and winter of 2013, storm main twinning construction was carried out in the original community garden site, making a mess of the garden. The site was returned to near original state using replacement soil. Time will be required to fix the soil, but it is fully functional.
- An additional 2000 square feet was added since the site had been entirely worked up.
- The strawberry beds were redesigned and rebuilt.
- Both garden sites are typically completely rented, with approximately 45 families gardening in the spaces provided.
- Work is being done to improve the tidiness of the borders and prevent the encroachment of grasses.
- A third community garden site was requested and funding was applied for to build it in the east side of town. It was funded partially by TDFEF.
- Broke ground and set up a third site in Spring 2015, with 6000 square feet of space. **1/3 of the space is raspberry orchard and additional fruiting shrub border.** Water tank and signage installed, along with a lean-to shed for tools.
- **Additional 2000 square feet of space planted with fruiting shrubs** at the first community garden.
- Soil and compost added, garden shed doors at #1 painted and decorated in 2016

NEW in
2014/2015

NEW in
2015/2016

Purpose

- Provide people with space to have a garden and experience the benefits of gardening
- Education and training to be developed
- Connection with schools and other groups within the community
 - Numerous classes were able to participate in and visit the gardens
 - Students provide the bulk of the labour for spreading mulch in the spring.
- Food Bank Donations of fresh vegetables throughout summer and fall

Amenities

- Garden plots are comprised of private garden plots for single season rental in a range of sizes
 - 10 ft. x 10 ft. (100 square feet) for \$5 each
 - 10 ft. x 22 ft. (220 square feet) for \$10 each
 - 22 ft. x 22 ft. (484 square feet) for \$20 each
 - 6 private raised planter beds (+ 1 demonstration bed)

- 3 ft. x 8 ft. raised bed (2 ft. high) for \$20 each (single season rental)
 - Relatively wheelchair accessible, with 4 foot alleys
- Food bank gardens approximately 500-1000 sq. ft./ year
 - Planted by volunteers (students, community residents, committee members)
- Bark mulched alley ways
- Garden shed (with combination lock)
- Tools for use by gardeners – watering cans, hoes, rakes, shovels, garden forks, hand tools, push garden seeder, wheelbarrows, etc.
- 1 - 500 gallon and 1 – 300 gallon water tank at first site; 1 – 500 gallon tank at 2nd site; 1- 550 gallon tank at 3rd site – filled by town
- Ornamental border (annual ornamental grasses in 2010; sunflowers in 2011; pansies, sunflowers & strawberry/herb raised beds) and rail fences provide a visual and aesthetic barrier. Perennial vines added in 2012. Fruit shrubs border at 2nd site and 3rd site. Orchards planted in blocks at 1st and 3rd site.
- Information sign – calendar, gardening rules, gardening information (pests, how-to's), etc.
- Fruit shrubs (sour cherries, blue honeysuckle, black currants, raspberries) planted at various sites in site in 2013 and 2015. Most beds have some of the fruit bushes fruiting (increasing annually).

Work

- All initial ground preparation work (spraying grass/weeds, rototilling, soil amendment) is done by Town of Stettler staff
- All final preparations (staking plots, mulching alleyways, hand rototilling, seeding the ornamental border (grasses or flowers), building the rail fences, etc. has been carried out by volunteers (committee, community residents, students, etc.)
- New gardens built through combination of town staff and contracted services and mostly volunteer labour by students and others.

Materials

- Wm E. Hay High School wood fabrication classes were contracted to build the garden shed and the raised bed planters
- Generous donations from community residents and businesses supplied the majority of tools initially. Tools purchased from budget afterwards, or donated.
- Seed and other materials (fence materials) were sourced from local businesses
- Local contractors and suppliers were used for the majority of materials (as much as possible)
- Primer for shed door from Stettler Eco Centre; paint purchased for base colour and logo design

2010 (5000 sq. ft.)



2011 (8600 sq. ft.)



Stettler Community Gardens - 2011

2012 (13,000 sq. ft.)





2013 (13,000 sq. ft. + 7500 sq. ft.) – 2 different sites







2014 (+ 2000+ sq ft to existing 13,000 at original site)



NEW in
2014/2015

2015 (+ third site – 6000 sqft + 2000 sqft at first site) - ~29000 sq ft at 3 sites



20 STETTLER INDEPENDENT

Wednesday, October 21, 2015

Community gardens, creating a sense of fraternity and bonding

MOUSH SARA JOHN
INDEPENDENT REPORTER

Stettler officially launched its third community gardens last month, in Sept. 2015, an indication of what is possible if communities come together and care enough to build something.

Speaking about the benefits of community gardens, Rob Spencer, chair, Stettler community gardens subcommittee of the Heartland Beautification Committee, said, "There are a number of benefits of community gardens, because first of all, we have repurposed some waste or less attractive spaces into a functional and, in most cases, more attractive space." "Additionally, those spaces are now creating a community or social space for people to come together and interact," Spencer added. "People have a space where they can grow their

own healthy vegetables, as well as capture some horticultural therapy of growing plants at a low cost."

When community members participate in community gardens, either as a gardener or volunteer, they take away a sense of ownership or buy-in, which help them to protect the space.

Discussing the etiquette of people who are a part of this venture, Spencer said, "They are positive and respectful and care about the success of the overall space."

However, community gardens are only possible if organizations are willing to award grants and funding. Acknowledging the generosity of these organizations, Spencer said, "We've been able to access funds each year from the Town of Stettler's Heartland Beautification Committee's budget."



The third community gardens of Stettler is located at the east end of 51 Avenue, in the east end of the town. It was completed with an additional grant of \$2,000 from TD Friends of the Environment Foundation (TDFEF).

"Additionally, we've received close to \$20,000 from two separate grants from the TD Friends of the Environment Foundation (TDFEF), one for about \$18,000 to build the second community gardens and a second for \$2,000 for trees/shrubs at the third community gar-

dens," added Spencer. No community project is complete without volunteers.

According to Spencer, all the community gardens were made possible by a "tonne of in-kind hours of labour from the schools", the community and other donations from business-

es, mostly in the form of discounts or donations of tools.

Recalling how the first community gardens in Stettler came about, Spencer said, "The initial concept came about through Alberta Health Services and a group of people from various

groups and organizations in the community, as well as individuals."

"The idea was to decide what they would look like in Stettler, which led to the formation of a community forum, held to discuss it and then it just grew from there," said Spencer.

In a world where interaction has been minimized by technological advances, the concept of social spaces such as the community gardens is unique.

"I think that community gardens are an important part of Stettler, as it brings so many people together that wouldn't interact otherwise and I expect that they'll continue to contribute for years to come," said Spencer. "Depending on the format of the gardens, they can serve a range of purposes, with ours, we are accomplishing what we set out to accomplish."

You said it – We DID it
"In keeping with the food production tradition, adding additional community gardens...the establishment of a fruit and nut orchard would help demonstrate to residents the types of trees that would thrive in the Stettler environment... trees are tagged with an ID label. Residents are permitted to harvest the fruit or take it to the local food bank."

In 2018, we established a community orchard that provides free produce to residents and the Food Bank.

It also serves as a demonstration planting, showcasing many different types of fruit, as well as different varieties/cultivars, along with different planting methods. We'll also be doing educational activities in the site.

Phase 1 = 2018

Phase 2 = 2019

NEW in
2017/2018/2019

Stettler Community Orchard



After years of dreaming of an orchard for the community (and it continually falling through due to lack of successful grants), we re-imagined the concept. An empty, bare greenspace adjacent to the Mall was selected to be the site for a multi-purpose park/orchard. The orchard is built in 2 parts (Phases), comprising a total of 40,000+ square feet of space, including close to 2000 trees, shrubs and perennial flowers. The site is designed to work around buried utilities, with pathways and ornamental borders acting as utility access pathways. To deepen of soil profile (increasing by 1 to 2.5+ feet), the Town brought in 500 truckloads of topsoil to the site, from a site that required a snow dump location. Throughout late 2017 and early 2018, fundraising efforts were carried out, contacting local businesses, promoting the project to individuals, groups, organizations, and beyond. We applied for numerous grants, to pay for the massive project. Grants have been a challenge; we had several failed applications, but a TDFEF grant for \$10,000, in addition to incredible local support, has resulted in funds of over \$60,000 raised. Donors range from individuals to service clubs, organizations and businesses. Over 60+ donors contributed. Many local businesses have contributed equipment and labour to carry out aspects of the project. Suppliers have generously provided discounts to allow us to reach our goal. The entire project was essentially funded mid-summer 2018. Phase 1 was completed in 2018, and Phase 2 completed in spring 2019.

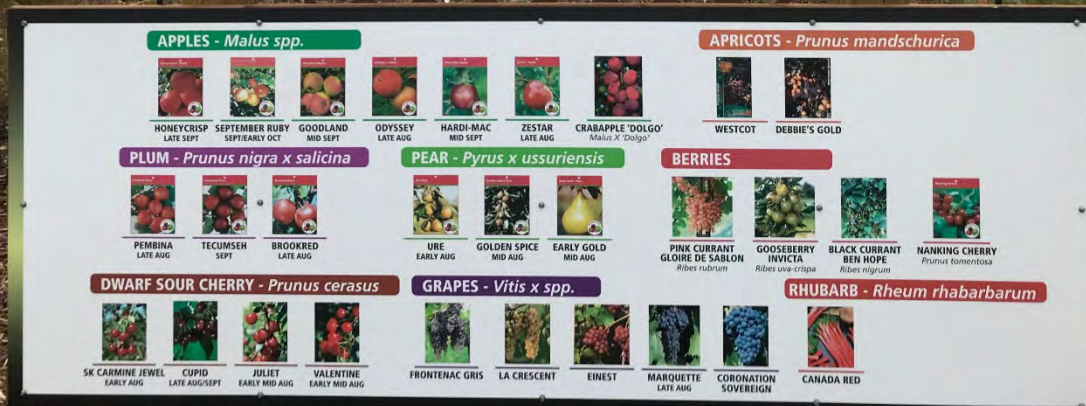
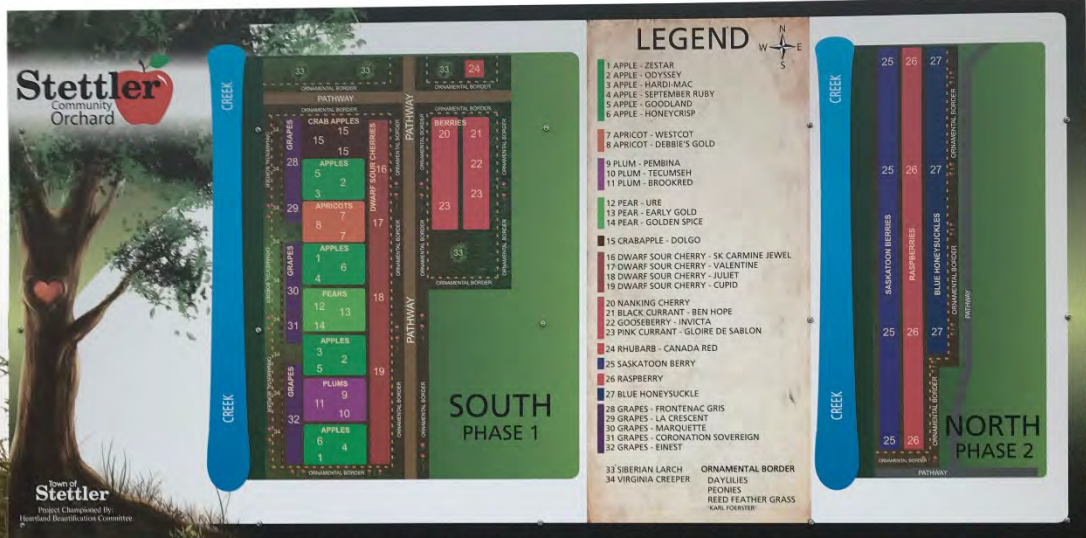
The orchard has and will be built and maintained by community volunteers. Planting Parties and workbees are carried out from time to time, with some assistance from volunteer businesses, and support by TOS staff. Trees were initially watered by hand by volunteers and TOS staff until the irrigation was installed. Volunteers installed and run the drip system, as required, as well as fertilize, prune, etc.

The Community Orchard includes the following features:

- 540 hardy fruiting trees and shrubs, including multiple varieties of apples (2 each of 6 vars), pears (3 vars), plums (3 vars), crabapples (1 var), apricots (2 vars), dwarf sour cherries (4 cultivars), nanking cherries, black and pink currants, gooseberries, Saskatoon berries (2 cultivars), raspberries (3 cultivars), haskap/blue honeysuckle (2 cultivars), rhubarb and grapes (5 vars).
- 4 large Siberian larch and 30 Virginia creeper vines; 2 Wisteria vines; 1 hops; 2 clematis vines.
- A lattice fence on the west edge of Phase 1 (for the vines – grapes inside, Virginia creeper outside)
- ~1500+ perennial flowers/ornamentals, including peonies (6 named varieties, plus unnamed mixed colours), daylilies (18 varieties), Karl Foerster Reed Feather Grass in borders and pathway borders
- Drip irrigation for entire site
- Phase 2 has an additional ~300 perennial flowers (14 different daylilies, 3 colours of peony, 1 Veronica speedwell) in a border planting.
- The entire site is covered with bark mulch
- Map / Legend sign, along with pictures of all fruit and flower species for education; Additional information signage on pollinators and bats (Phase 2); Donor signage facing highway and walking pathways
- All trees and rows of fruit shrubs will have plant marker stakes, to indicate varieties. Picture signage will be used for the named perennials.
- The entire site is open to the public, with signs indicating picking rules. Excess produce will be supplied to the Food Bank. Educational elements will be added in the future.
- Additional elements will be added in future depending on funding

See following pages for:

Map & Fruit, Donor signage of the orchard; Donors & flower signs; Pictures – Phase 1 & 2 planting







Landscape Redesign Projects

Stettler Middle School (SMS) and Stettler Elementary School (SES) School Greening Projects

Several years ago, SMS and SES worked together to **enhance the green spaces on the Stettler Complex** site. A committee at each school was formed to represent the desires and needs of the students, staff and community. Representatives worked closely with Olds College Landscape Design students to come up with a design concept for the green space. The space included **two outdoor classrooms**, garden beds, walking paths, an obstacle course and plenty of greenery.

In the summer of 2013, the SMS installed **wooden planters/bench seating** and **raised beds** in their outdoor space. Additional phases of the plan have been installed since. The project and staff champions were recognized by HBC as Beautification Champion in 2015.

Stettler Outdoor Space Revitalization Project (Grade 2 site)

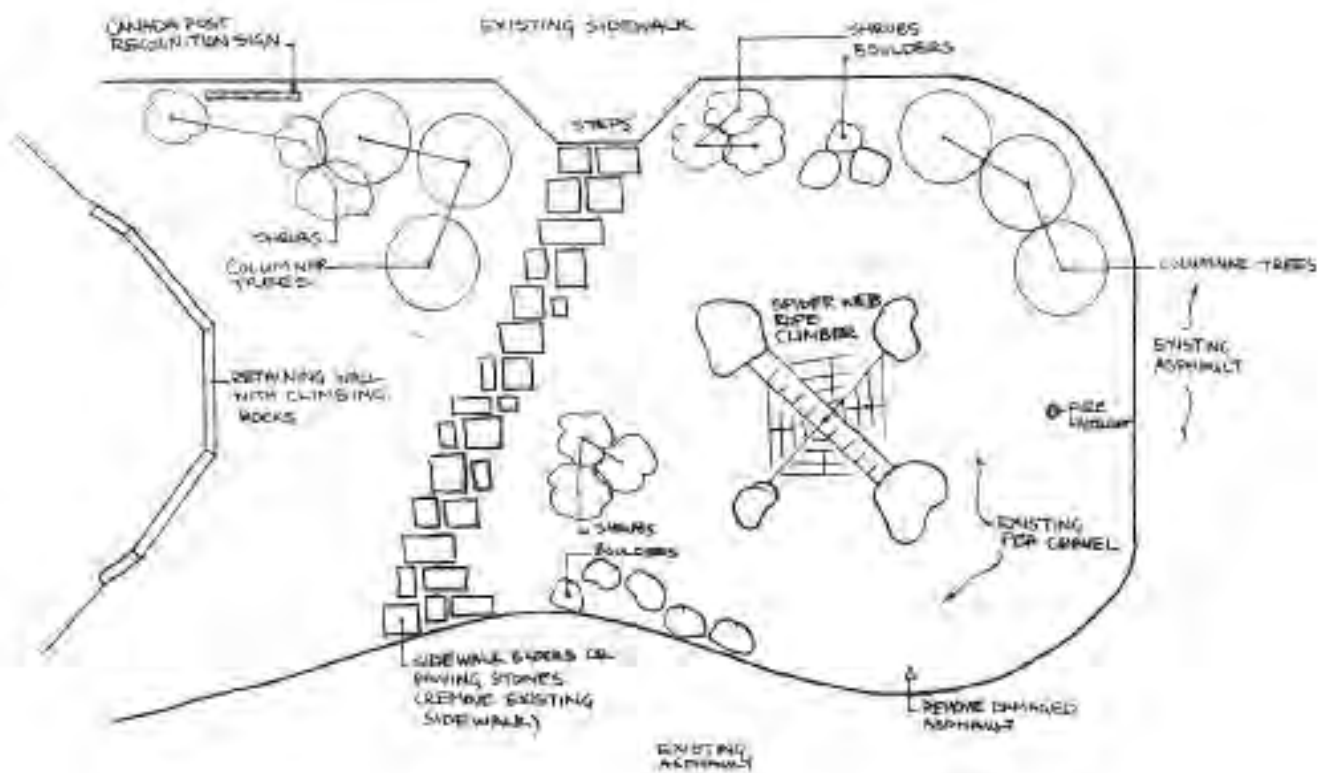
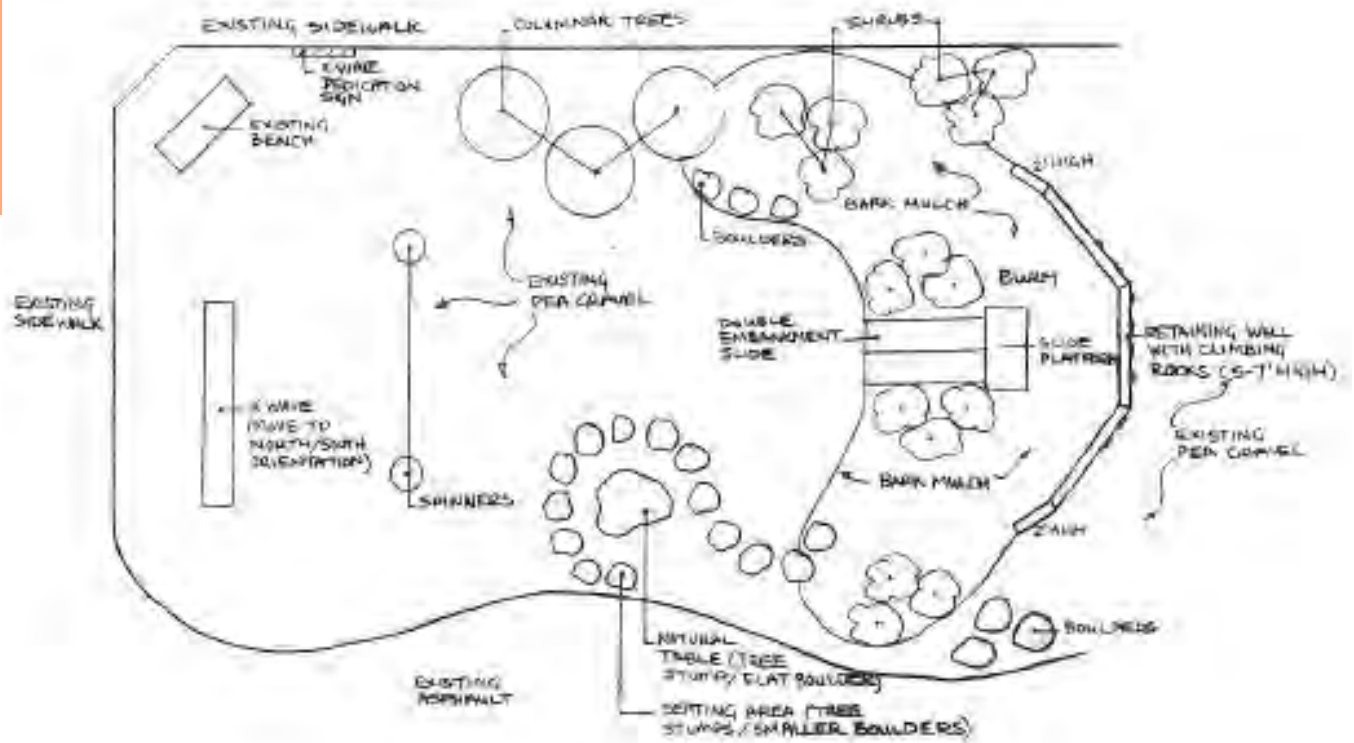
The staff, students and parent council at SES identified a need to collectively plan and revitalize an area of the school's outdoor play space. In 2012, when damaged and unsafe play equipment was removed from the site, an empty barren space was left behind, void of any plant material.

Through community consultation and discussion, a decision was made to convert the area into a community **playground focusing on natural elements**. A **naturalized playground** was identified and supported by students' request for trees, rocks, and paths and is also in line with current ideas of re-connecting children to nature as a positive and supportive behaviour.

All children and families within the town of Stettler and surrounding area are able to enjoy this **interactive and fun space**, as it is accessible to anyone, at any time, throughout the year. The centrally located community site brings residents together to engage in play, experience the benefits of greenery and nature, as well as being a popular walking destination.

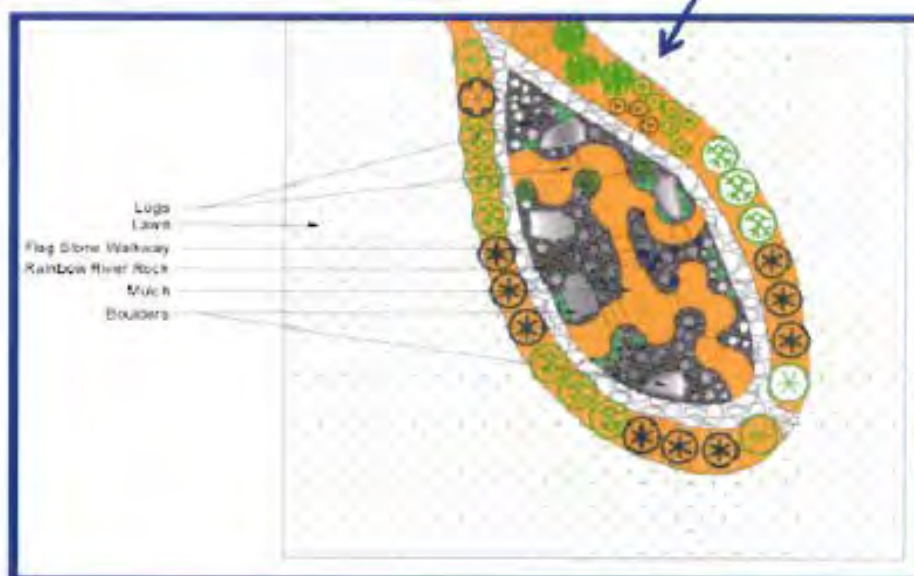
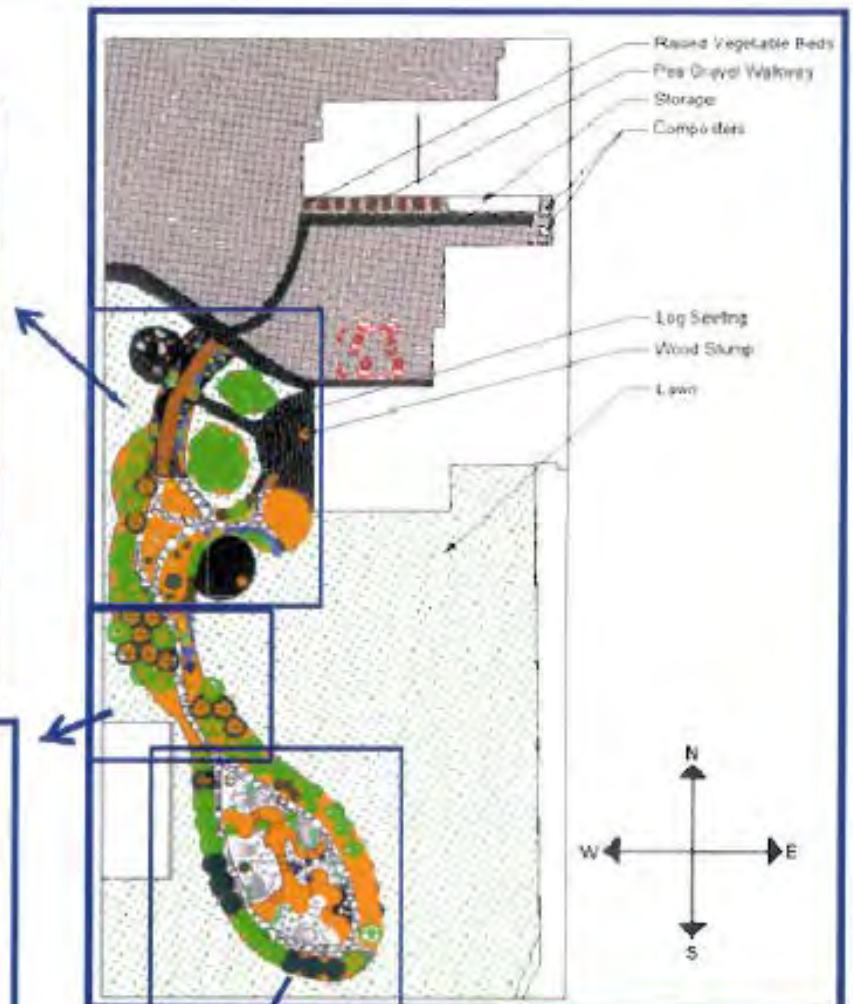
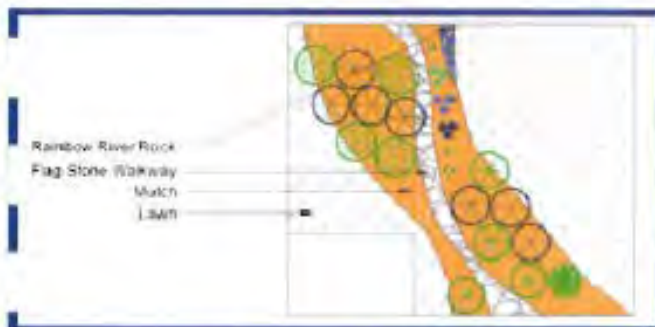
The naturalized play space includes a triple slide built into a berm including greenery, a horizontal climbing wall, perennial/tree beds, mulch and pea gravel for exploratory play, a climbing structure, rocks/boulders, a walking path, art boards, and an obstacle course.

This was a successful recipient of the **Agrium Community Green Spaces Program (Communities in Bloom)** grant in 2013 (1 of 2 Alberta communities). Project completion was delayed due to last minute changes with the playground inspector. The project was completed in late 2014.



The Stettler School Landscape Design

APPENDICES





Stettler Elementary School Grade 2 playground

NEW in
2014/2015



NEW in
2014/2015

Stettler Middle School Revitalization Project



Stettler Middle School outdoor revitalized area



**Stettler Middle School
landscaped and bermed areas**

Cold Lake Migratory Bird Sanctuary

Also known as “Buttermilk Slough”, this body of water is home to **many species of migratory birds**. Walking paths surround portions of the “lake”, allowing visitors and bird watchers to get closer to the birds. The walking paths are gradually being improved and expanded, and the bird nest platforms replaced. Local businesses have added seasonal “Goose Crossing” signs, to alert motorists.



**Cold Lake Migratory Bird
Sanctuary / Buttermilk Slough**

Composting Collection Bin Sites

A number of **yard waste compost collection bin sites** exist across Stettler. Each collection bin site features a white picket fence screen, with a small landscaped bed, to improve the integration into the neighborhood and make the sites attractive. Large, clear signs give instructions as to permitted or prohibited products.



Yard waste compost collection site

Volunteer Maintenance and Landscape Beautification

Many areas of the community are maintained by community volunteers, mowing and maintaining large public spaces in their neighborhood. In some public areas, **residents practice Guerilla gardening**, where they plant, landscape, develop and beautify public areas along alleyways, railroad track ditches and wide communal public areas that transition into untouched grassland/wooded areas.



Public areas landscaped by adjacent homeowners



Vegetable gardens planted to beautify waste public spaces

Guerilla Gardens – “Awesome Alley”



Guerilla gardens – landscaped public areas

You said it – We DIDN'T DO it (YET)!

“Stettler Lake is a jewel as it is, but to enhance this wonderful area, consider some additions:”

“An adult fitness station near the playground, allowing the whole family to exercise together.”

“If you have physically handicapped children in the area, how about a raised sandbox or some specially designed play equipment...”

Plans are underway to redesign elements of WSP, including adding more natural types of play features. These wouldn't be restricted to children, or anyone. However, going forward, we'll keep these points in mind.

You said it – We DID it (already)! (we think...)

“When cutting turf in the parks, cemetery or anywhere else, consider the mulching feature on the mower, as this is less labour intensive and is better for the grassed areas.”

Only the specialty mower at the cemetery has a bagging function on it, to accommodate the higher level of care requested by users. The rest of the large area mowers cut and leave the clippings behind.

